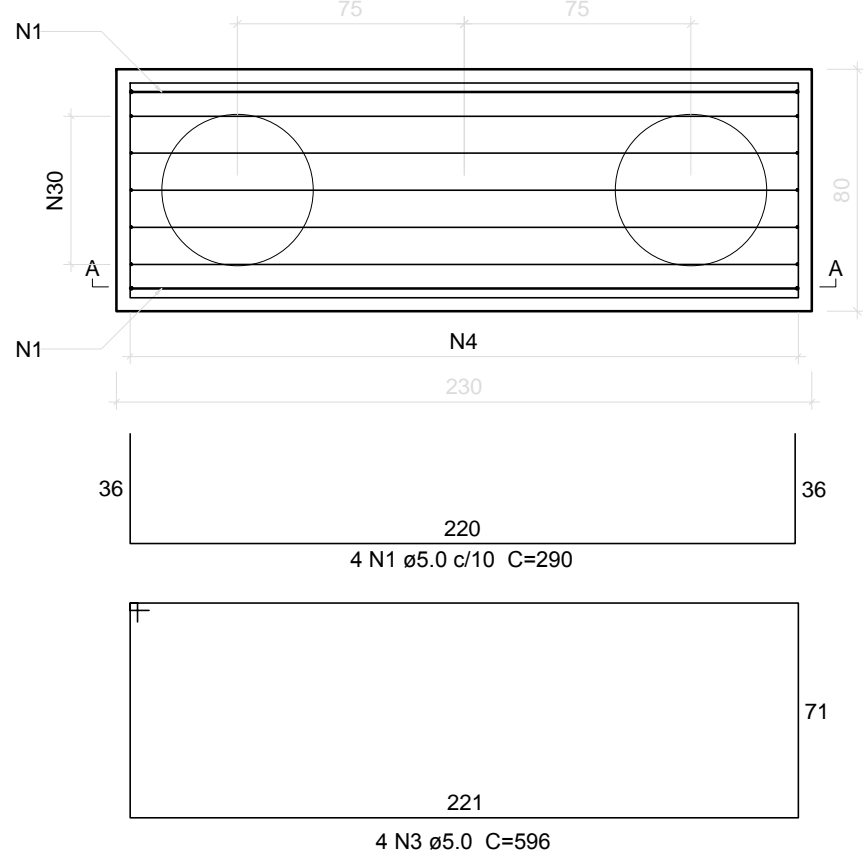
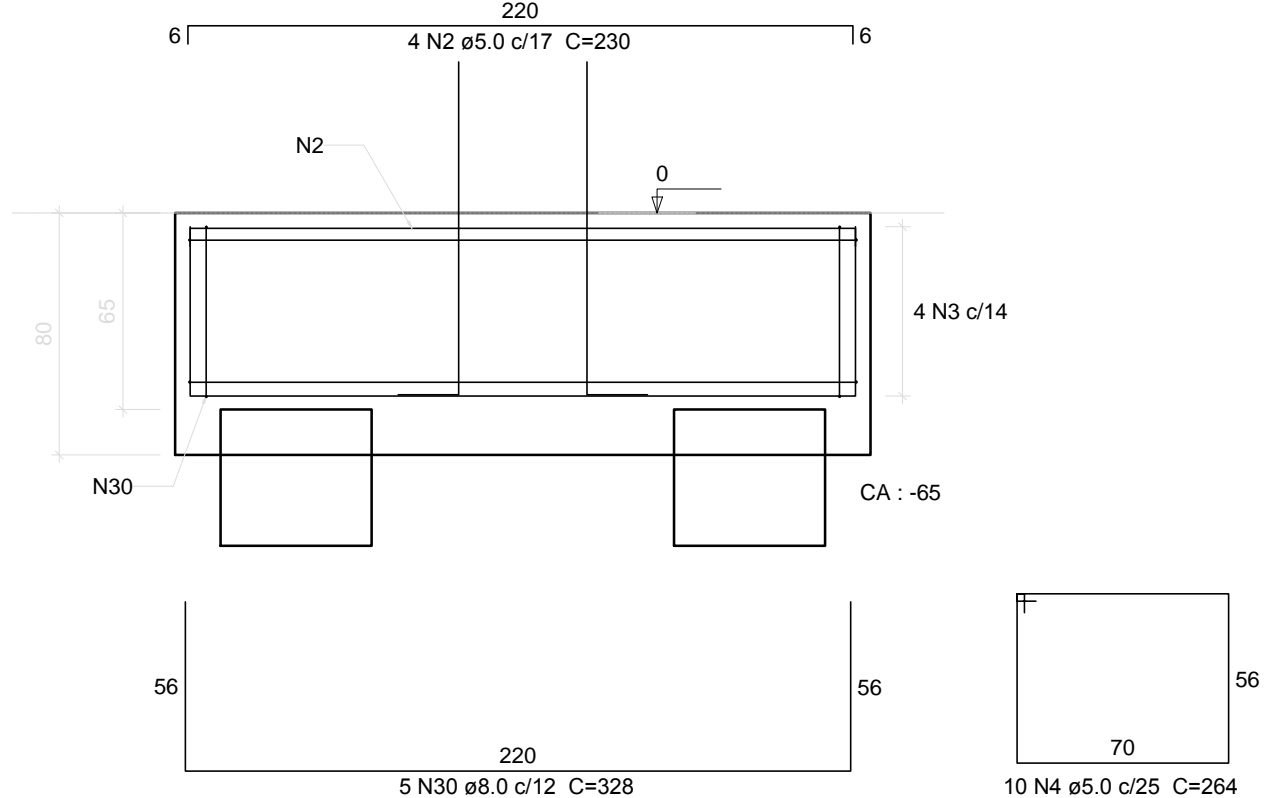


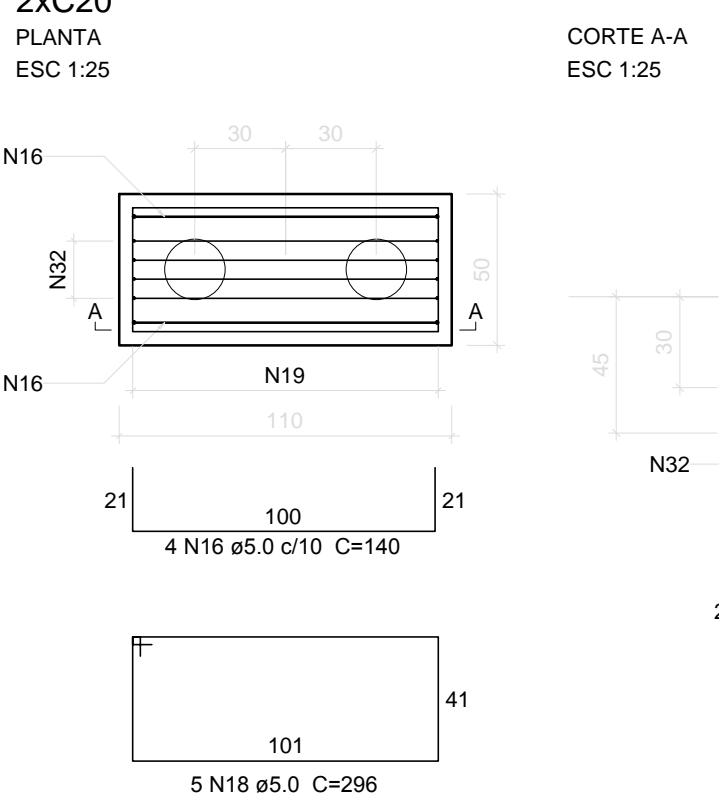
B1=B2=B3=B10=B11=B14=B15=B18=B22=B23
=B28=B33=B38=B53=B54=B58=B60=B61=B76
2xC50
PLANTA
ESC 1:25



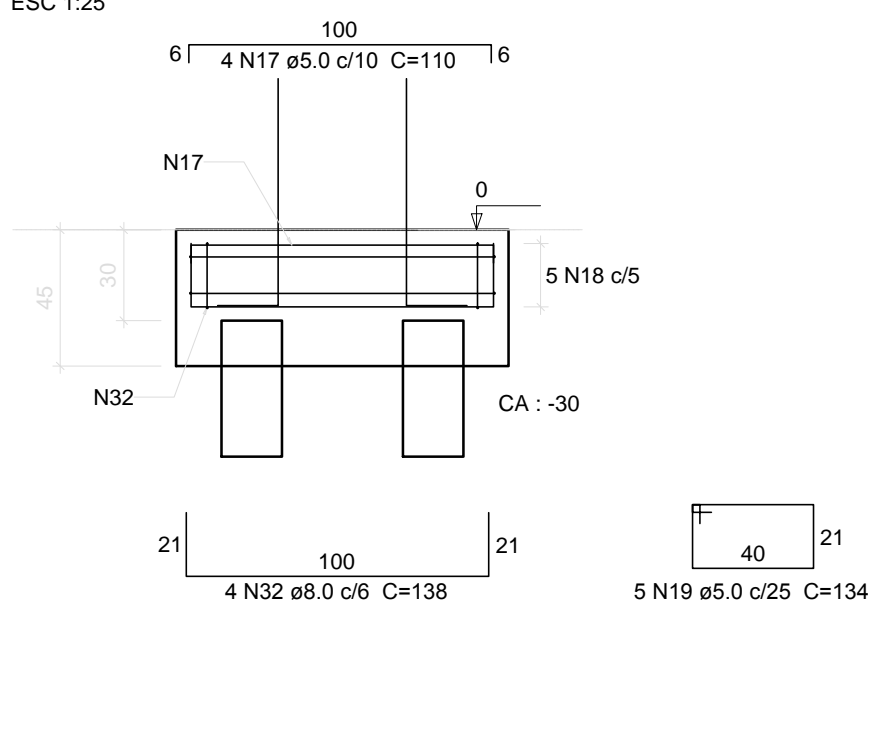
CORTE A-A
ESC 1:25



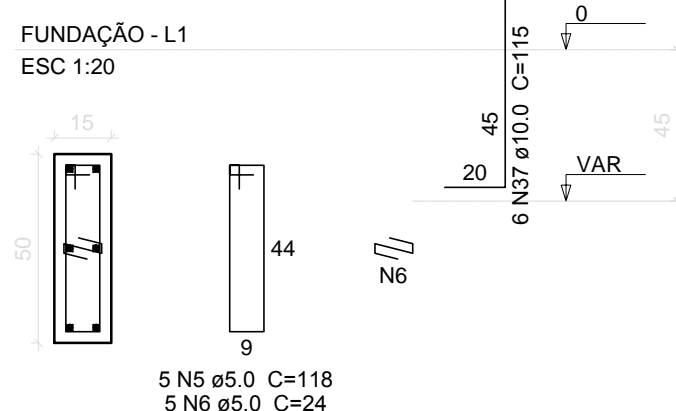
B5=B8=B9=B16=B17=B19=B20=B21=B24=B26
=B27=B31=B35=B36=B37=B40=B41=B42=B43
=B44=B45=B46=B48=B50=B51=B52=B55=B56
=B57=B59=B66=B67=B69=B70=B71=B74
2xC20
PLANTA
ESC 1:25



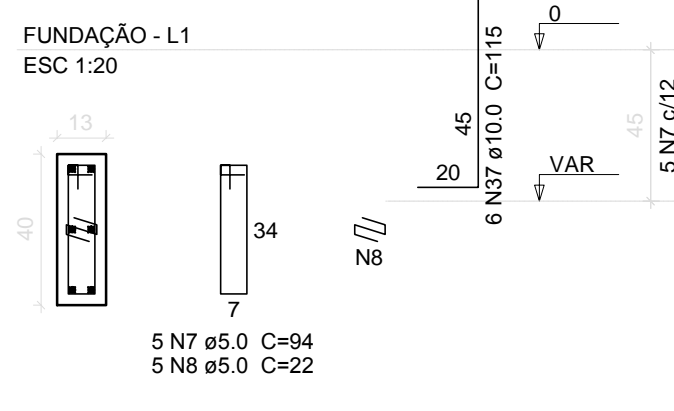
CORTE A-A
ESC 1:25



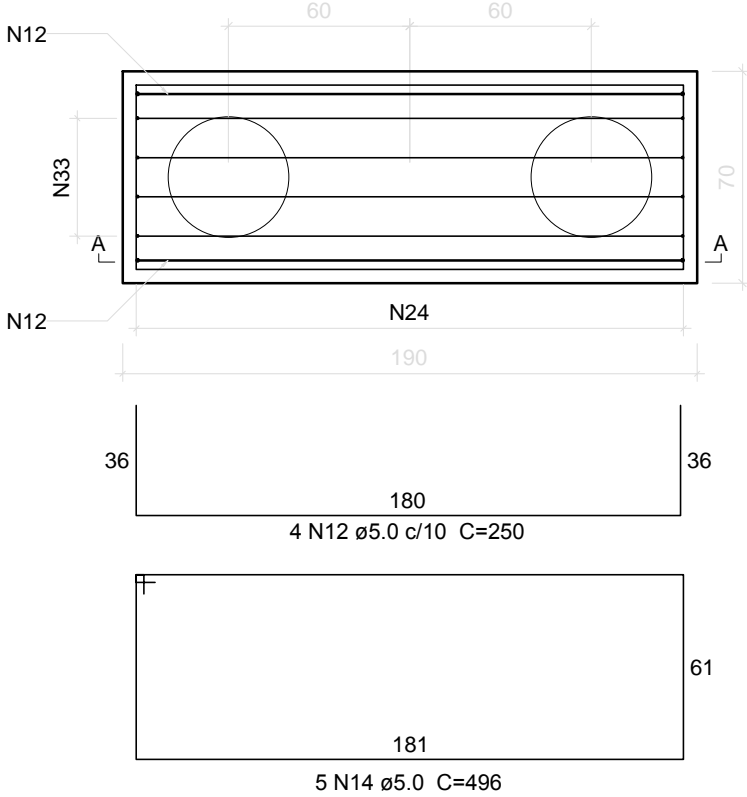
P4=P75



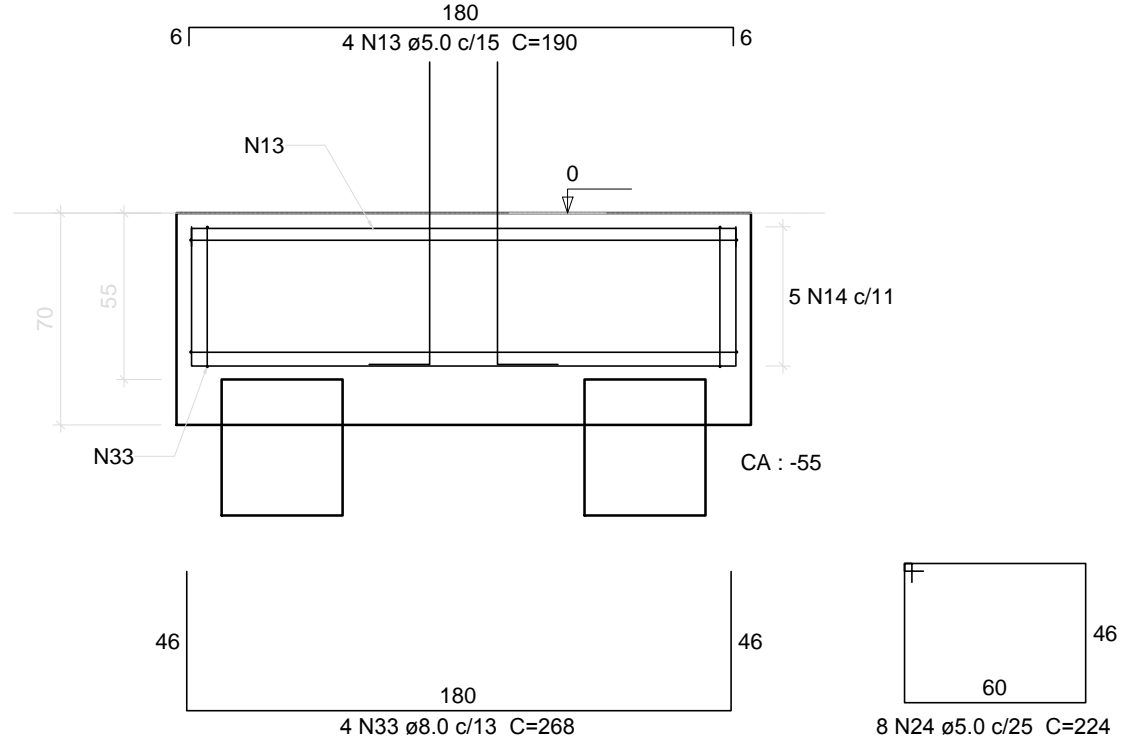
P29=P32=P39=P47=P64=P65



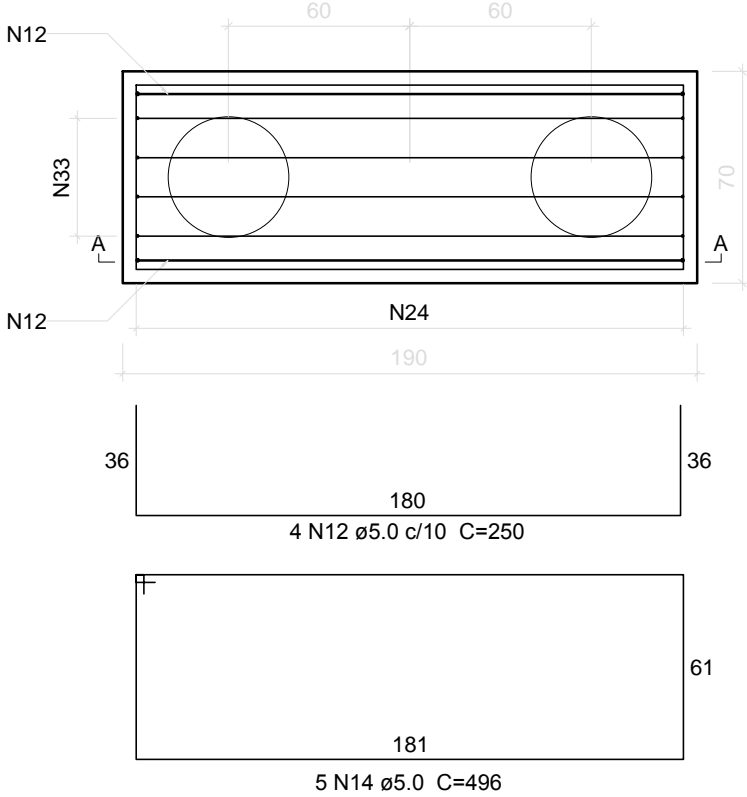
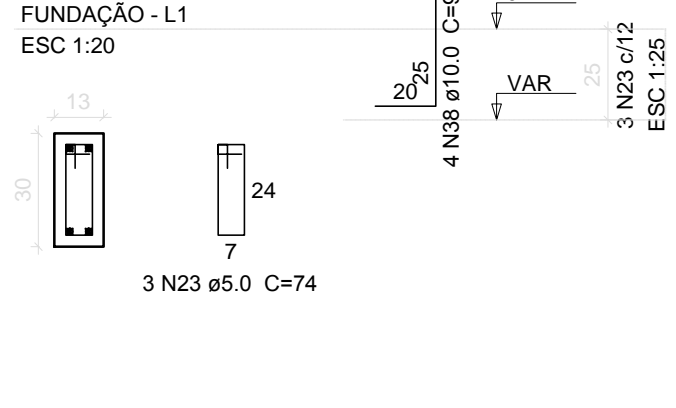
B6=B7=B12=B13=B25=B30=B49=B62=B68=B72
=B73
2xC40
PLANTA
ESC 1:25



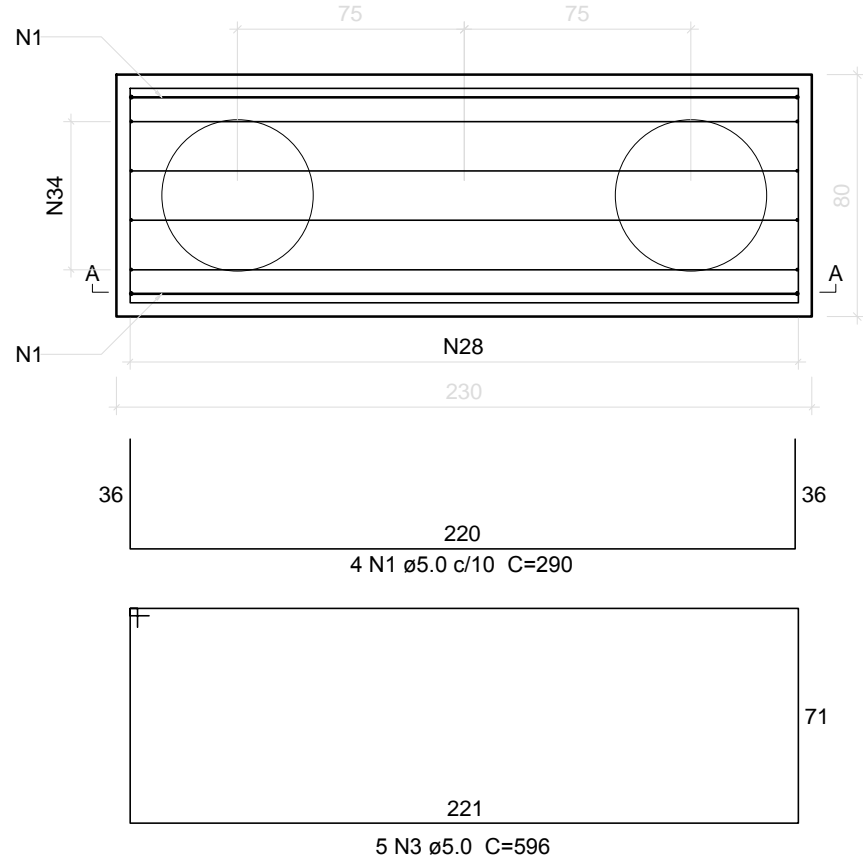
CORTE A-A
ESC 1:25



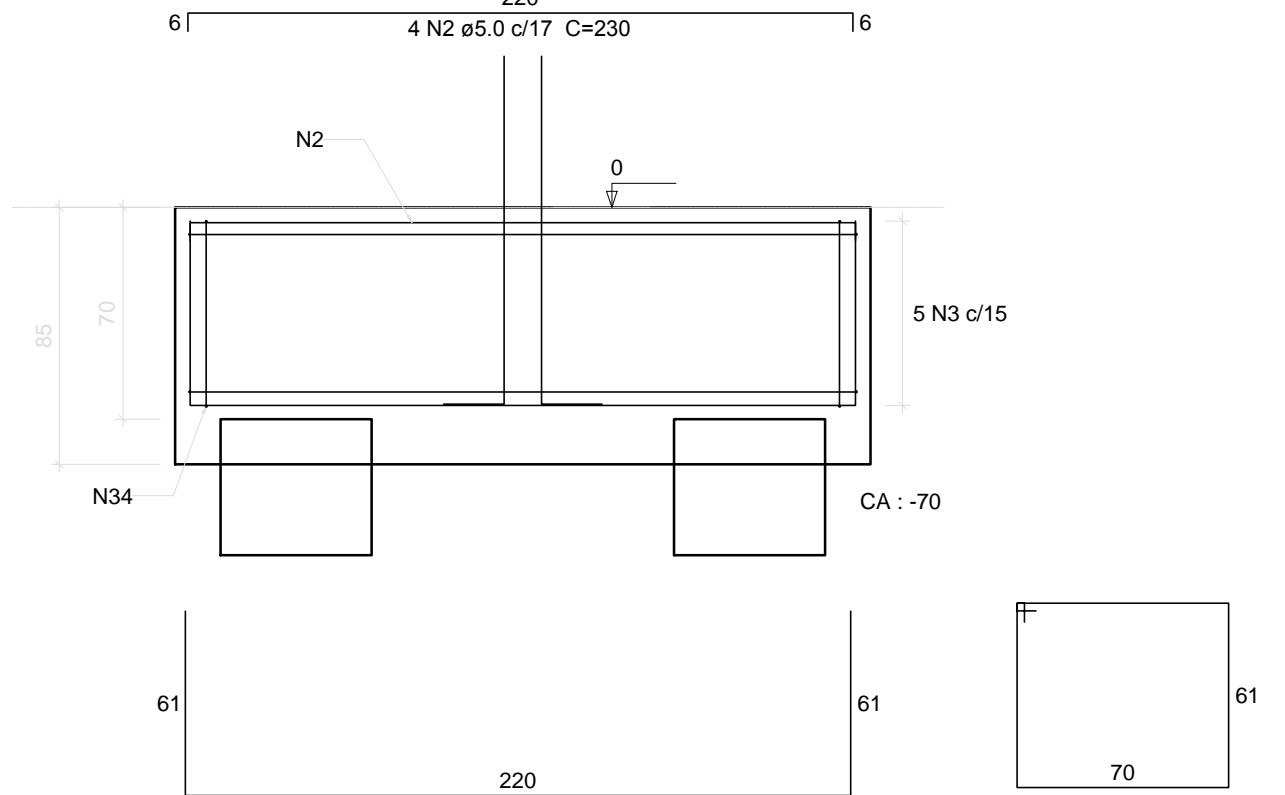
P48=P67=P69=P70



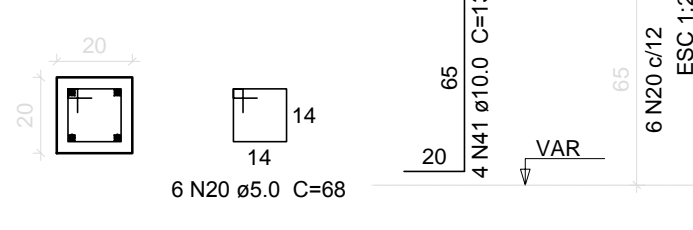
B63
2xC50
PLANTA
ESC 1:25



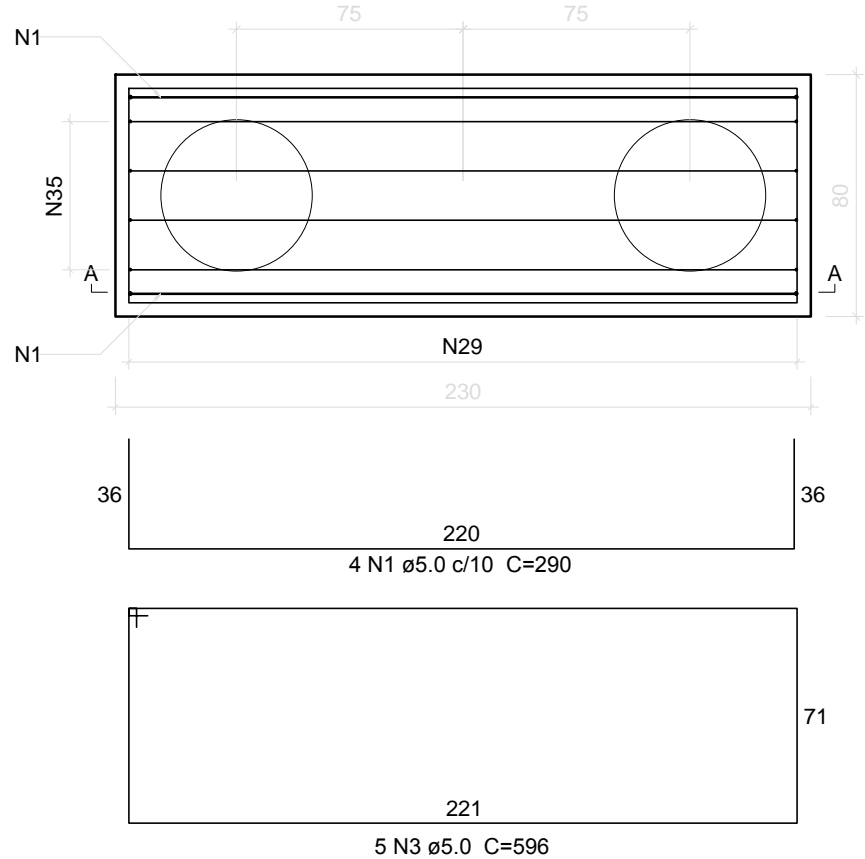
CORTE A-A
ESC 1:25



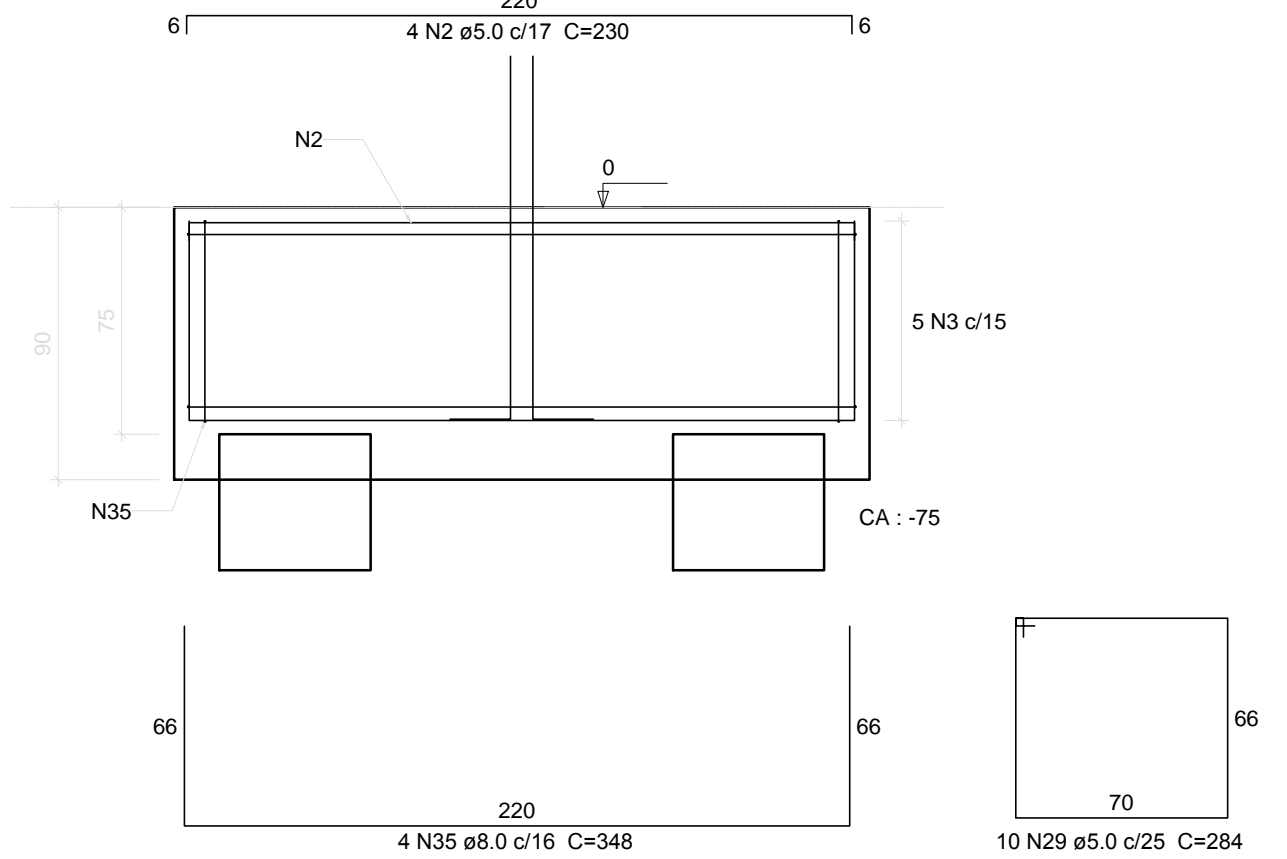
P63



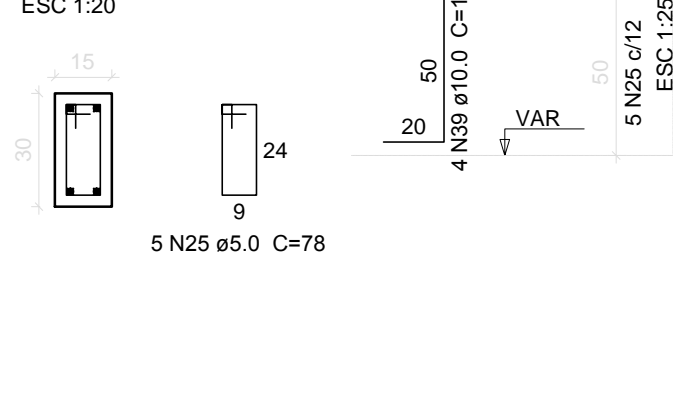
B77=B78
2xC50
PLANTA
ESC 1:25



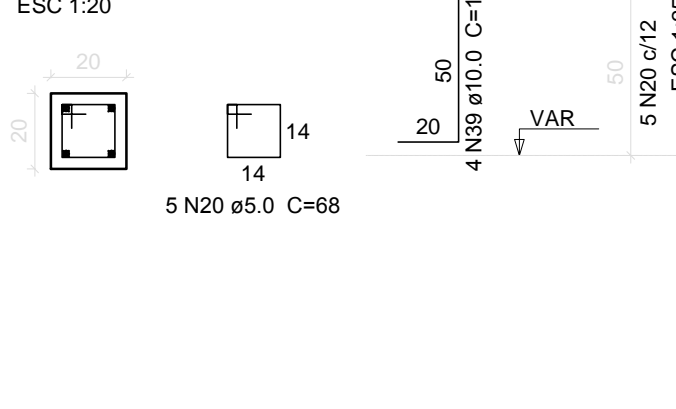
CORTE A-A
ESC 1:25



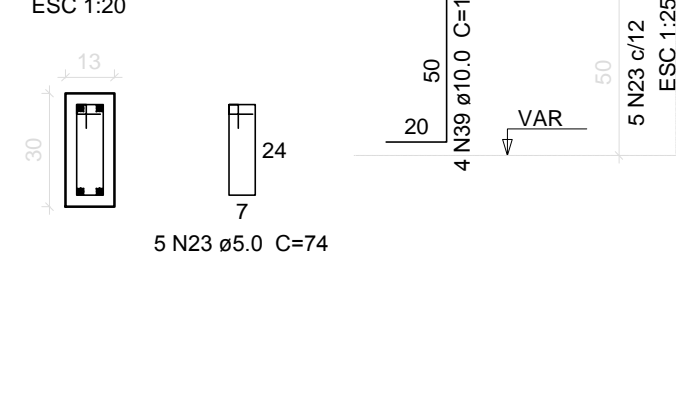
P6=P7=P72=P73



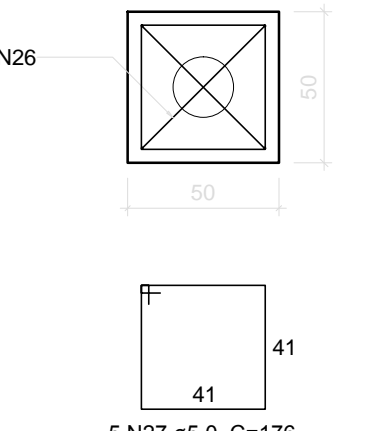
P12=P13=P30=P62



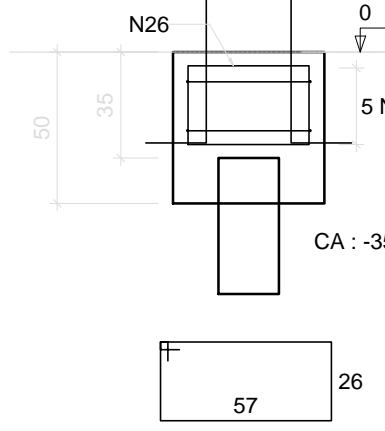
P25=P49=P68



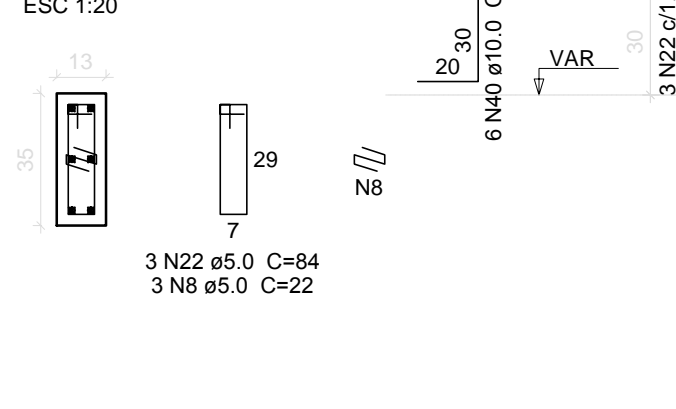
B34
1xC20
PLANTA
ESC 1:25



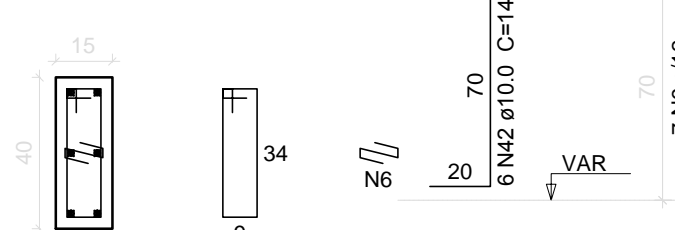
CORTE
ESC 1:25



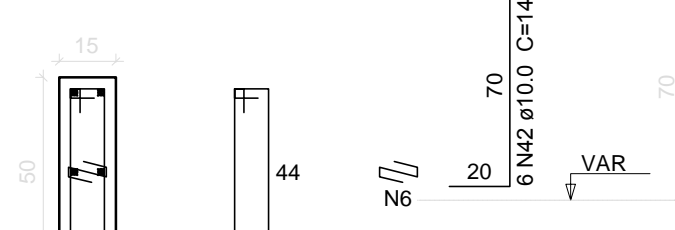
P34



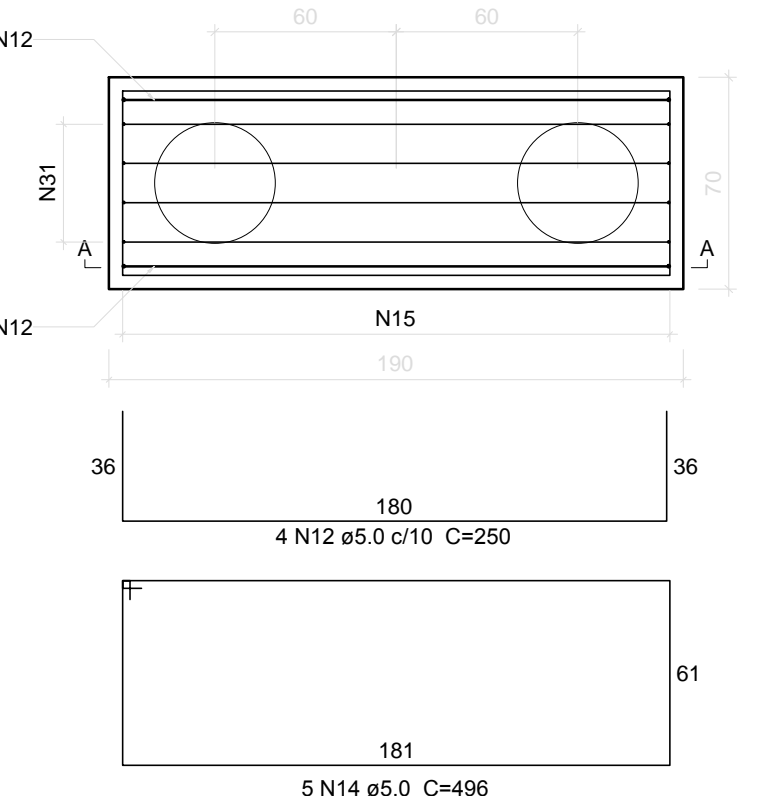
P77



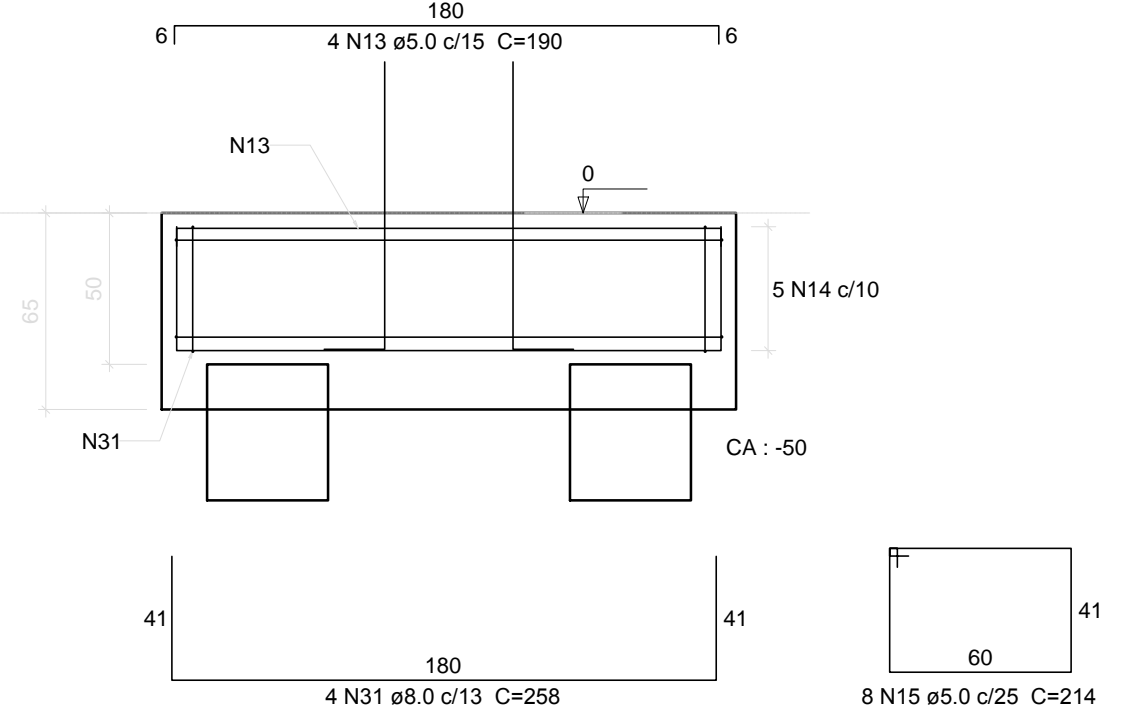
P78



B4=B29=B32=B39=B47=B64=B65=B75
2xC40
PLANTA
ESC 1:25



CORTE A-A
ESC 1:25



Relação do aço

ACO	N	DIAM (mm)	QUANT	C.UNIT (cm)	C.TOTAL (cm)
CA60	1	5.0	88	290	25520
	2	5.0	88	230	20040
	3	5.0	91	596	54236
	4	5.0	190	264	50160
	5	5.0	89	118	10502
	6	5.0	132	24	3168
	7	5.0	96	94	9024
	8	5.0	102	22	2244
	9	5.0	43	98	4214
	10	5.0	6	148	888
	11	5.0	18	39	702
	12	5.0	76	290	19000
	13	5.0	76	190	14440
	14	5.0	95	496	47120
	15	5.0	64	214	13696
	16	5.0	144	140	20160
	17	5.0	144	110	15840
	18	5.0	180	296	53280
	19	5.0	180	134	24120
	20	5.0	47	68	3196
CA50	21	5.0	6	116	696
	22	5.0	6	84	504
	23	5.0	27	74	1998
	24	5.0	88	224	19712
	25	5.0	20	78	1560
	26	5.0	2	178	356
	27	5.0	5	176	880
	28	5.0	10	274	2740
	29	5.0	20	284	5680
	30	8.0	95	328	31160
	31	8.0	32	258	8256
	32	8.0	144	138	19872
	33	8.0	44	268	11792
	34	8.0	4	338	1352
	35	8.0	8	348	2784
	36	10.0	116	130	15080
	37	10.0	48	115	5520
	38	10.0	194	95	18430
	39	10.0	44	120	5280
	40	10.0	6	100	600
	41	10.0	4	135	520
	42	10.0	12	140	1680

Resumo do aço

ACO	DIAM (mm)	C.TOTAL (m)	PESO + 10 % (kg)
CA50	8.0	752.2	326.5
CA60	5.0	471.1	319.7
PESO TOTAL (kg)		4258.8	722.1
CA50	646.2		
CA60	722.1		

Volume de concreto blocos (C-25) = 58.76 m³
Volume de concreto estacas (C-25) = 141.37 m³
Área de forma = 289.06 m²



UNIDADE DE GERENCIAMENTO DE PROJETOS

PROGRAMA PROINFÂNCIA - PROJETO TIPO 2

PROJETO ESTRUTURAL - FUNDAÇÃO BLOCOS - EMEIS

EQUIPE TÉCNICA DA UGP

Eng. Civil Mirela de Faria - CREA-RS 146401
Eng. Civil Vinicius Ferreira - CREA-RS 150330
Arq. Elise Dutra - CAU A 46844-4
Arq. Estela Halpern - CAU A 42815-9

Av. Ferreira Viana, nº. 1135, Areal, CEP 96085-000, Pelotas/RS - Tel.: (053) 3227 15 13
Site: www.pelotas.rs.gov.br - E-mail: ugp@pelotas.com.br

Prancha

05/14

Escala

INDICADA

Data

MAR / 2016